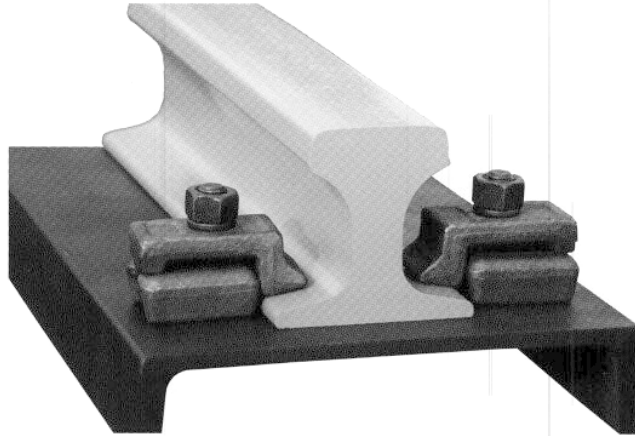


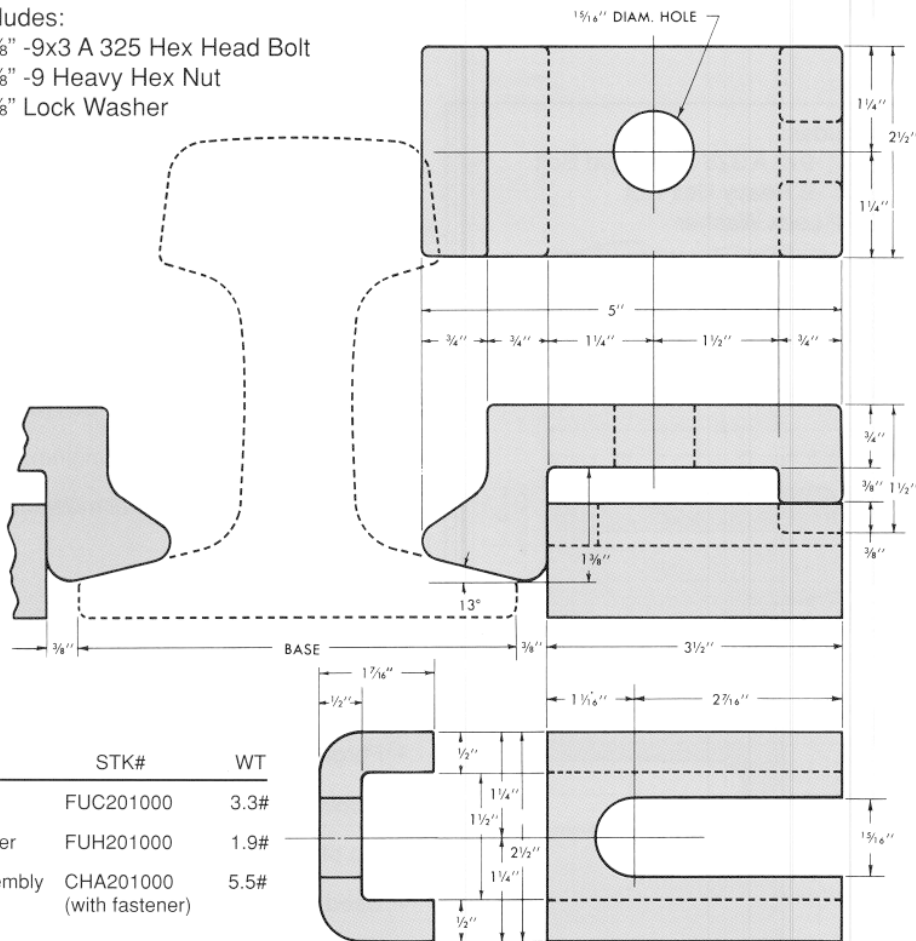
No. 201

Adjustable Forged Single Clip and Holder



Includes:

- 1-7/8" -9x3 A 325 Hex Head Bolt
- 1-7/8" -9 Heavy Hex Nut
- 1-7/8" Lock Washer



- Recommended 2 foot on center.
- Easy installation with single bolt mounting.
- Adjustable in field for rail alignment.
- High resistance to rail turnover.
- Suitable for all crane rail sections 80# thru 175#.
- Forged from A36 steel.
- Weld in place.
- Eliminates need for making holes in top of girder.
- Used as a tight or loose fit.
- 100% made in U.S.A.

Crane runway installation may be either the "tight" or "loose" type. In the former, the rails are anchored tightly to the runway; in the latter, provision is made for sufficient lateral and longitudinal movement to permit thermal expansion and contraction, as well as to prevent binding of wheel flanges. Lateral movement is limited by the clip which fastens the rails to the runway. Longitudinal movement can be contained by a stop-plate installed at least 3 inches from each end of the runway rail. Clip is furnished with a clip holder which must be welded to the supporting beam or girder.